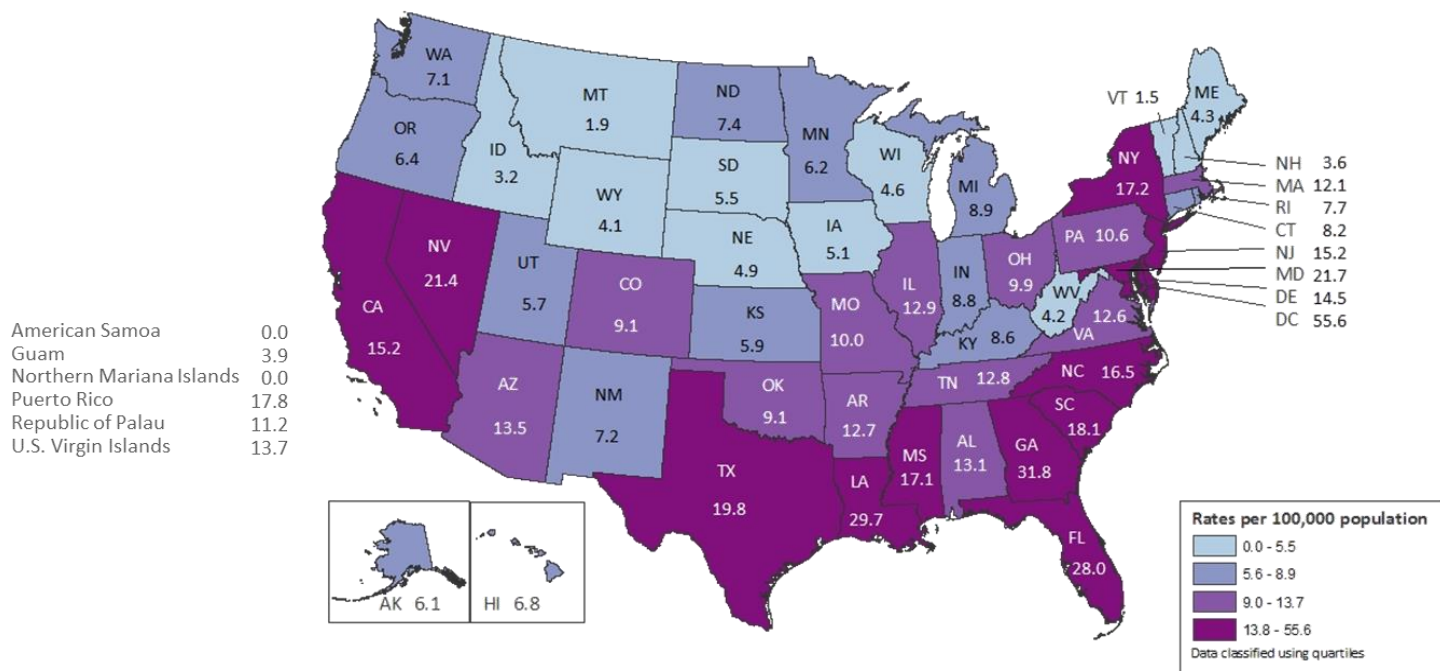
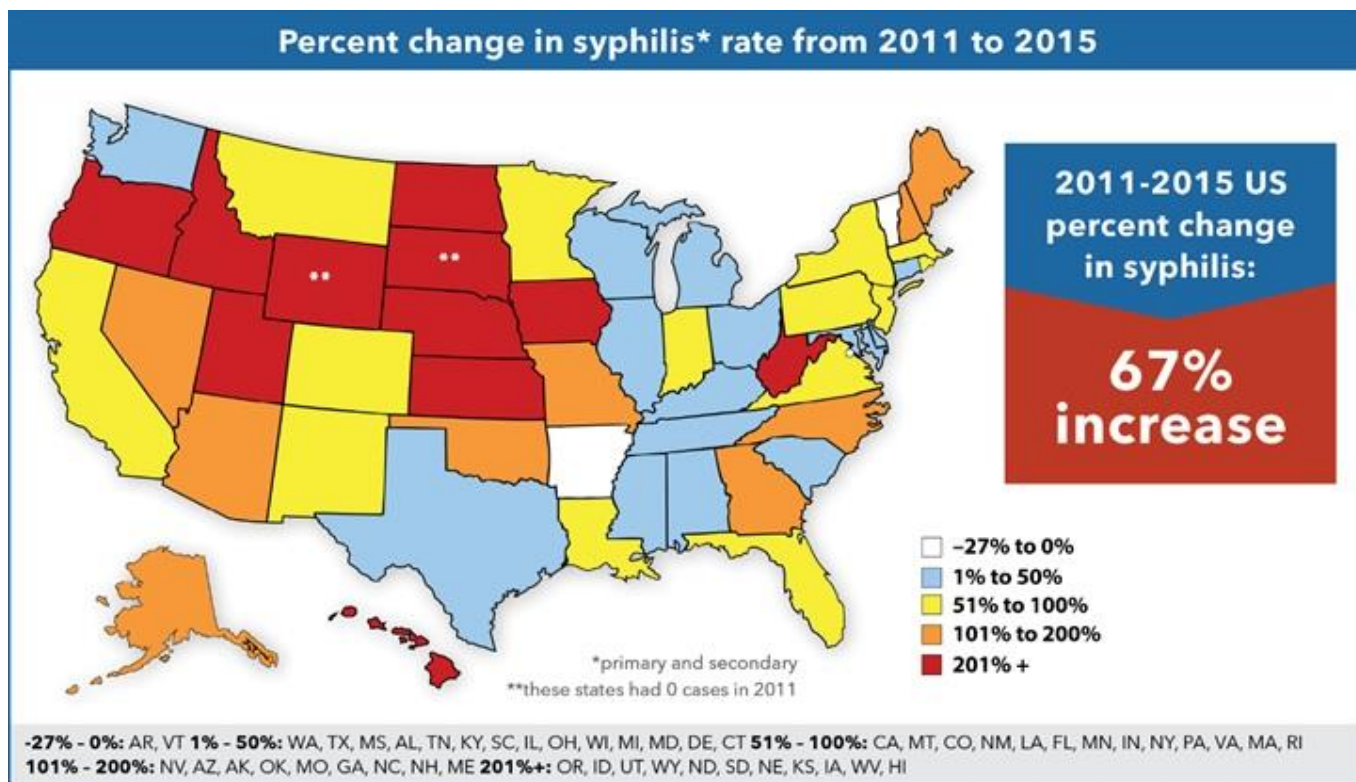


Rates of Diagnoses of HIV Infection among Adults and Adolescents 2016— of Diagnoses United States and 6 Dependent Areas

N = 40,202 Total Rate = 14.7



CDC. Epidemiology of HIV infection through 2016. <https://www.cdc.gov/hiv/library/slidesets/>.



CDC Call to Action: Let's Work Together to Stem the Tide of Rising Syphilis in the United States.
<https://www.cdc.gov/std/syphilis/syphiliscalltoactionapril2017.pdf>.